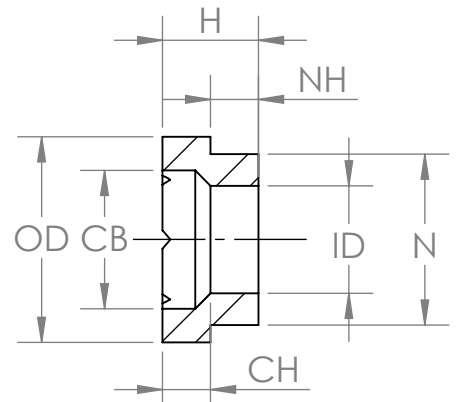
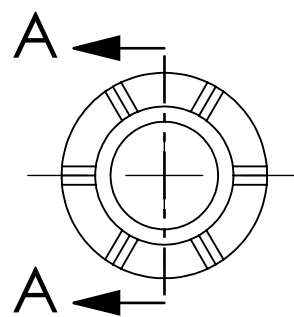


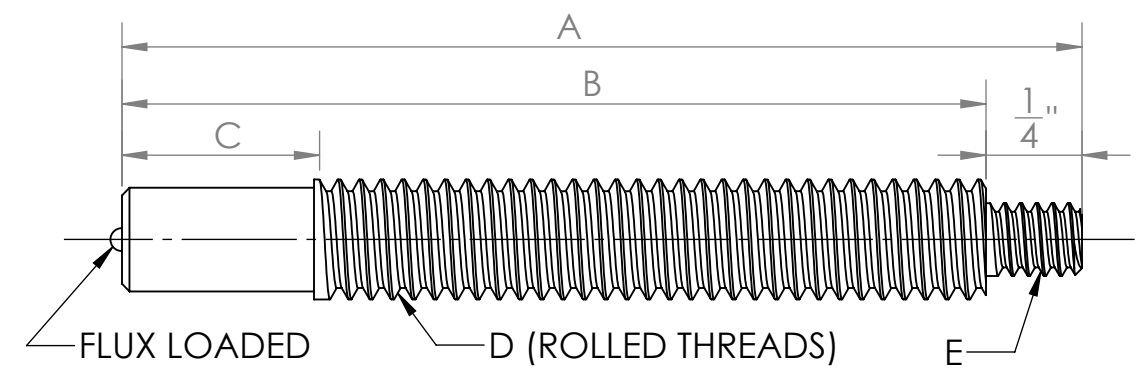
NO.	A	B	C	D	E	FERRULE	STANDARD USED WITH:
-1	2"	1 3/4"	MIN.	5/16-18 UNC	10-24 UNC	F312	NO BACK-UP
-2	1 1/2"	1 1/4"	MIN.	5/16-18 UNC	10-24 UNC	F312	
-3	3"	2 3/4"	MIN.	5/16-18 UNC	10-24 UNC	F312	
-4	4"	3 3/4"	MIN.	5/16-18 UNC	10-24 UNC	F312	
-5	2 1/2"	2 1/4"	MIN.	5/16-18 UNC	10-24 UNC	F312	
-6	2 1/2"	2 1/4"	3/4"	5/16-18 UNC	10-24 UNC	P312	
-7	2 1/4"	2"	1"	5/16-18 UNC	10-24 UNC	P312	1" BACK-UP
-8	3"	2 3/4"	3/4"	5/16-18 UNC	10-24 UNC	P312	
-9	2 1/2"	2 1/4"	3/4"	3/8-16 UNC	1/4-20 UNC	P375	
-10	3 1/2"	3 1/4"	MIN.	5/16-18 UNC	10-24 UNC	F312	
-11	5"	4 3/4"	MIN.	5/16-18 UNC	10-24 UNC	F312	
-12	2 1/2"	2 1/4"	1/2"	5/16-18 UNC	10-24 UNC	P312	
-13	4 3/4"	4 1/2"	3"	5/16-18 UNC	10-24 UNC	P312	
-14	3"	2 3/4"	1 3/8"	5/16-18 UNC	10-24 UNC	P312	
-15	2 1/2"	2 1/4"	MIN.	3/8-16 UNC	1/4-20 UNC	F375	
-16	3 3/4"	3 1/2"	1 3/4"	5/16-18 UNC	10-24 UNC	P312	
-17	5"	4 3/4"	2 3/4"	5/16-18 UNC	10-24 UNC	P312	
-18	4 1/2"	4 1/4"	MIN.	3/8-16 UNC	1/4-20 UNC	F375	
-19	2 3/4"	2 1/2"	1 1/2"	5/16-18 UNC	10-24 UNC	P312	1 1/2" BACK-UP
-20	3 1/4"	3"	2"	5/16-18 UNC	10-24 UNC	P312	2" BACK-UP
-21	2"	1 3/4"	MIN.	3/8-16 UNC	1/4-20 UNC	F375	PETROBRAS
-22	2"	1 3/4"	1/2"	5/16-18 UNC	10-24 UNC	P312	1/2" BACK-UP
-23	1 1/4"	1"	MIN.	3/8-16 UNC	1/4-20 UNC	F375	
-24	2"	1 3/4"	MIN.	3/8-16 UNC	1/4-20 UNC	F375	
-25	4"	3 3/4"	MIN.	3/8-16 UNC	1/4-20 UNC	F375	
-26	1 1/2"	1 1/4"	MIN.	3/8-16 UNC	1/4-20 UNC	F375	



SECTION A-A

STUD & FERRULE FOR USE  
W/PYRO BLOC-M MODULE

FERRULES SHIPPED WITH STUDS IN  
SEPARATE BOX



FERRULE	ID <sup>+0.015</sup> / <sub>-0.000</sub>	N <sup>±</sup> .010	OD <sup>±</sup> .015	H <sup>±</sup> .015	NH <sup>±</sup> .015	CB <sup>±</sup> .015	CH <sup>±</sup> .015
P312	.280"	.445"	.535"	.250"	.125"	.360"	.125"
P375	.340"	.505"	.595"	.264"	.125"	.406"	.125"
F312	.317"	.445"	.578"	.390"	.156"	.406"	.125"
F375	.385"	.505"	.640"	.390"	.156"	.468"	.141"

**PROPRIETARY AND CONFIDENTIAL**  
THE INFORMATION CONTAINED IN THIS  
DRAWING IS THE SOLE PROPERTY OF  
MALCO. ANY REPRODUCTION IN PART  
OR AS A WHOLE WITHOUT THE WRITTEN  
PERMISSION OF MALCO IS PROHIBITED.

UNLESS OTHERWISE SPECIFIED:		NAME	DATE
DIMENSIONS ARE IN INCHES		DRAWN	MW 1/12/26
TOLERANCES:		CHECKED	
FRACTIONAL $\pm$		ENG APPR.	
ANGULAR: MACH $\pm$ BEND $\pm$		MFG APPR.	
TWO PLACE DECIMAL $\pm$		Q.A.	
THREE PLACE DECIMAL $\pm$		COMMENTS:	
INTERPRET GEOMETRIC TOLERANCING PER:			
MATERIAL			
SEE TABLE			
FINISH			
NEXT ASSY	USED ON		
APPLICATION		DO NOT SCALE DRAWING	

TITLE:		
SIZE	DWG. NO.	REV
<b>B</b>	AS-350	0
SCALE: 2:1		WEIGHT:
		SHEET 1 OF 1

4

3

2

1