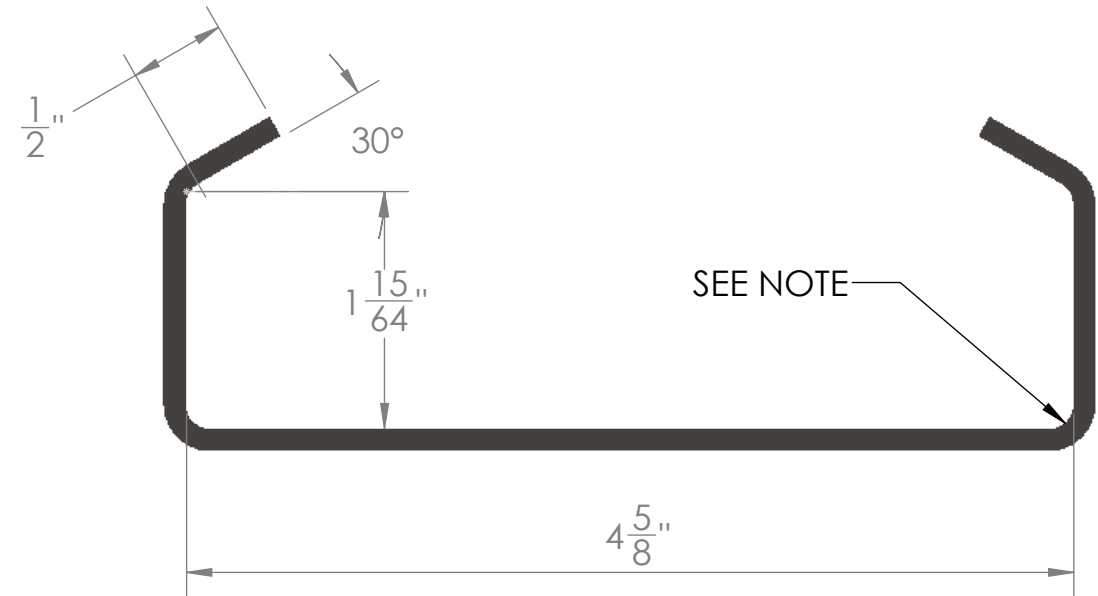
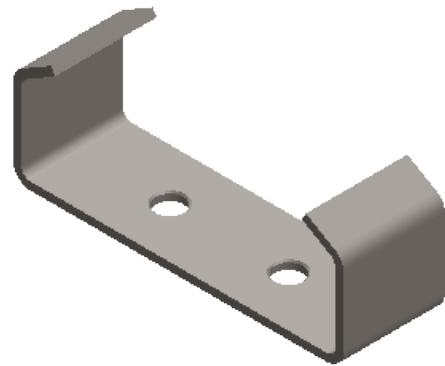
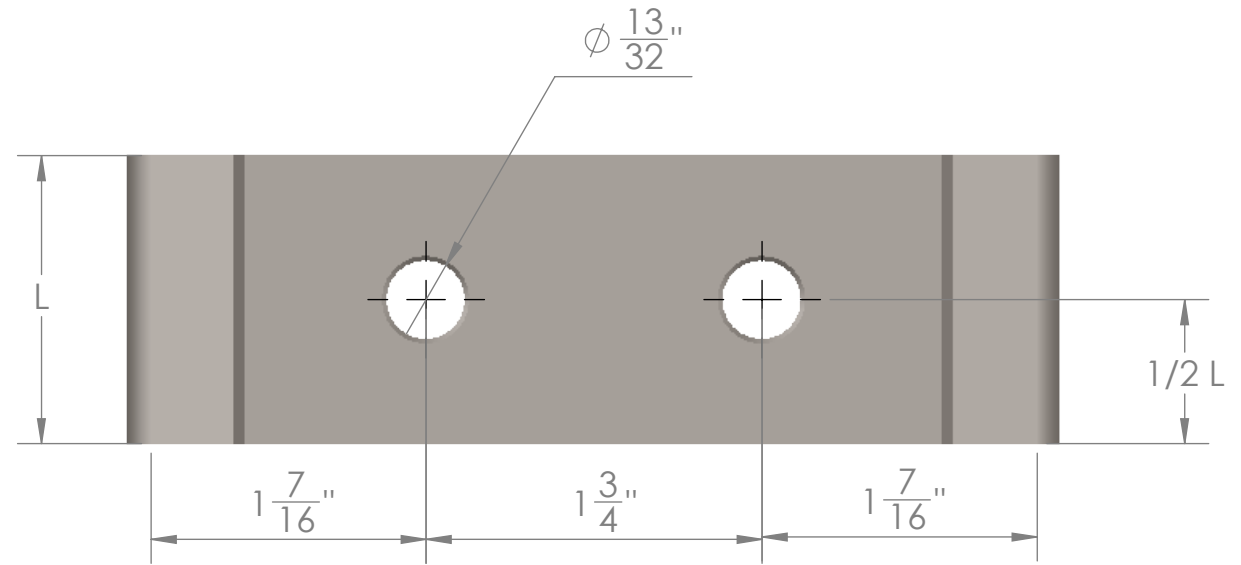



NO.	HOLDER NO.	STEEL TYPE	THICKNESS	TEMP USE LIMIT (°F)	SPECIAL SERVICE CONDITION	L (INCHES)
-1	C-1-3	CARBON	3 GA.	900°	----	2 1/2
-2	C-1-11	CARBON	11 GA.	900°	----	2 1/2
-3	C-4-3	304 SS	3 GA.	1500°	----	1 1/2
-4	C-4-11	304 SS	11 GA.	1500°	----	1 1/2
-5	C-9-3	309 SS	3 GA.	1900°	----	1 1/2
-6	C-9-1	309 SS	11 GA.	1900°	----	1 1/2
-7	C-10-3	310 SS	3 GA.	2100°	----	1 1/2
-8	C-10-11	310 SS	11 GA.	2100°	----	1 1/2
-9	C-16-3	316 SS	3 GA.	1500°	SULFUR ATMOSPHERE	1 1/2
-10	C-16-11	316 SS	11 GA.	1500°	SULFUR ATMOSPHERE	1 1/2



NOTE: BENDING RADIUS NOT TO EXCEED 1/8"

**PROPRIETARY AND CONFIDENTIAL**  
 THE INFORMATION CONTAINED IN THIS DRAWING IS THE SOLE PROPERTY OF MALCO. ANY REPRODUCTION IN PART OR AS A WHOLE WITHOUT THE WRITTEN PERMISSION OF MALCO IS PROHIBITED.

		UNLESS OTHERWISE SPECIFIED:		NAME	DATE
		DIMENSIONS ARE IN INCHES		DRAWN	MW 1/5/26
		TOLERANCES:		CHECKED	
		FRACTIONAL ±		ENG APPR.	
		ANGULAR: MACH ± BEND ±		MFG APPR.	
		TWO PLACE DECIMAL ±		Q.A.	
		THREE PLACE DECIMAL ±		COMMENTS:	
		INTERPRET GEOMETRIC TOLERANCING PER:			
		MATERIAL			
		SEE TABLE			
		FINISH			
NEXT ASSY	USED ON				
APPLICATION		DO NOT SCALE DRAWING			
		TITLE:			
SIZE	DWG. NO.	REV			
<b>B</b>	AS-273	0			
SCALE: 1:1		WEIGHT:		SHEET 1 OF 1	