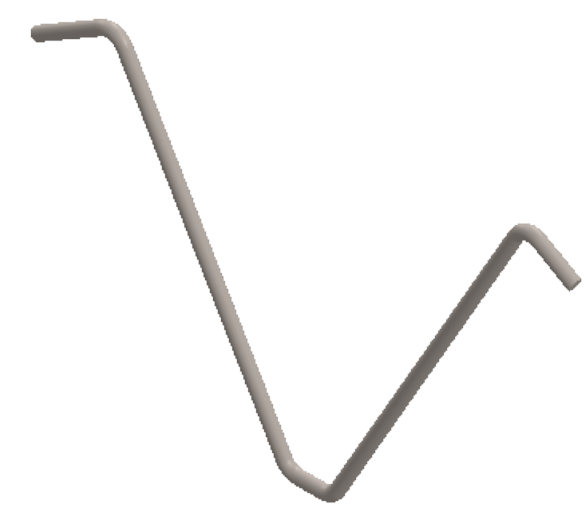
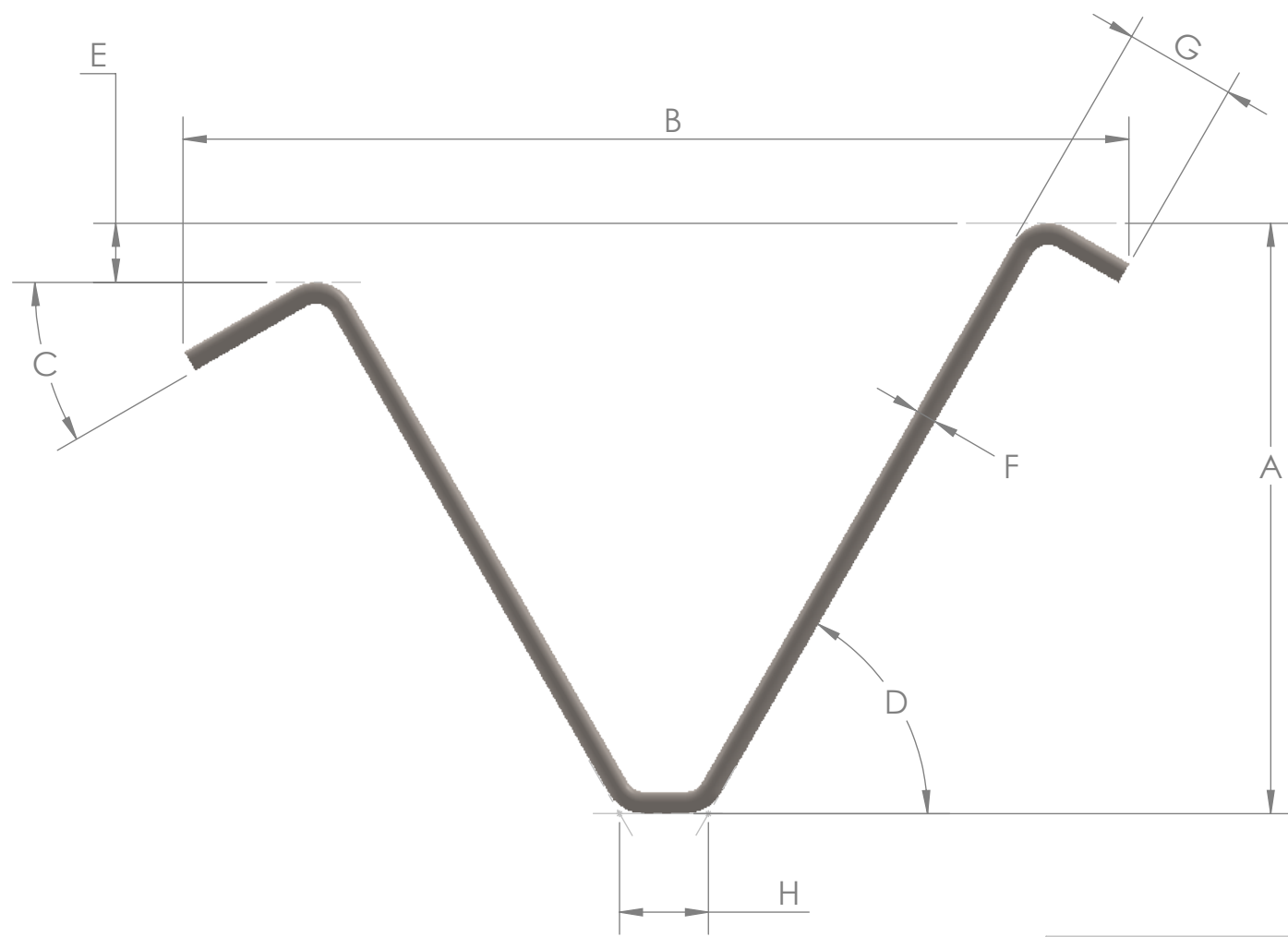



| NO. | A | B | C | D | E | F | G | H |
|-----|-------|--------|-----|-----|-----|------|-------|-----|
| -1 | 2 | 3 1/2 | 30° | 60° | 1/2 | 3/16 | 15/16 | 5/8 |
| -2 | 2 1/2 | 4 1/4 | 30° | 60° | 1/2 | 3/16 | 15/16 | 5/8 |
| -3 | 3 | 5 | 30° | 60° | 1/2 | 3/16 | 15/16 | 5/8 |
| -4 | 3 1/2 | 5 3/4 | 30° | 60° | 1/2 | 3/16 | 15/16 | 5/8 |
| -5 | 4 | 6 1/2 | 30° | 60° | 1/2 | 3/16 | 15/16 | 5/8 |
| -6 | 4 1/2 | 7 1/4 | 30° | 60° | 1/2 | 3/16 | 15/16 | 5/8 |
| -7 | 5 | 8 | 30° | 60° | 1/2 | 3/16 | 15/16 | 5/8 |
| -8 | 5 1/2 | 8 3/4 | 30° | 60° | 1/2 | 3/16 | 15/16 | 5/8 |
| -9 | 6 | 9 1/2 | 30° | 60° | 1/2 | 3/16 | 15/16 | 5/8 |
| -10 | 6 1/2 | 10 1/4 | 30° | 60° | 1/2 | 3/16 | 15/16 | 5/8 |
| -11 | 7 | 11 | 30° | 60° | 1/2 | 3/16 | 15/16 | 5/8 |
| -12 | 7 1/2 | 11 3/4 | 30° | 60° | 1/2 | 3/16 | 15/16 | 5/8 |
| -13 | 8 | 12 1/2 | 30° | 60° | 1/2 | 3/16 | 15/16 | 5/8 |
| -14 | 8 1/2 | 13 1/4 | 30° | 60° | 1/2 | 3/16 | 15/16 | 5/8 |
| -15 | 9 | 14 | 30° | 60° | 1/2 | 3/16 | 15/16 | 5/8 |



PROPRIETARY AND CONFIDENTIAL
 THE INFORMATION CONTAINED IN THIS DRAWING IS THE SOLE PROPERTY OF MALCO. ANY REPRODUCTION IN PART OR AS A WHOLE WITHOUT THE WRITTEN PERMISSION OF MALCO IS PROHIBITED.

| | | | | | |
|-------------|---------------|--------------------------------------|--------------|---|------------|
| | | UNLESS OTHERWISE SPECIFIED: | | NAME | DATE |
| | | DIMENSIONS ARE IN INCHES | | DRAWN | MW 12/1/25 |
| | | TOLERANCES: | | CHECKED | |
| | | FRACTIONAL ± | | ENG APPR. | |
| | | ANGULAR: MACH ± BEND ± | | MFG APPR. | |
| | | TWO PLACE DECIMAL ± | | Q.A. | |
| | | THREE PLACE DECIMAL ± | | COMMENTS: | |
| | | INTERPRET GEOMETRIC TOLERANCING PER: | | | |
| | | MATERIAL | | | |
| | | Stainless steel | | | |
| | | FINISH | | | |
| NEXT ASSY | USED ON | | | | |
| APPLICATION | | DO NOT SCALE DRAWING | | | |
| | | TITLE: | |  | |
| SIZE | DWG. NO. | REV | | | |
| B | AR-746 | 0 | | | |
| SCALE: 1:1 | | WEIGHT: | SHEET 1 OF 1 | | |